

4040 Creditview Drive Mississauga, Ontario

Mezz1

Square Feet	2,143 SF
Rental Rate	Please contact
Availability	Immediate
Term	Five Years
Built	1983 & 1990



Features

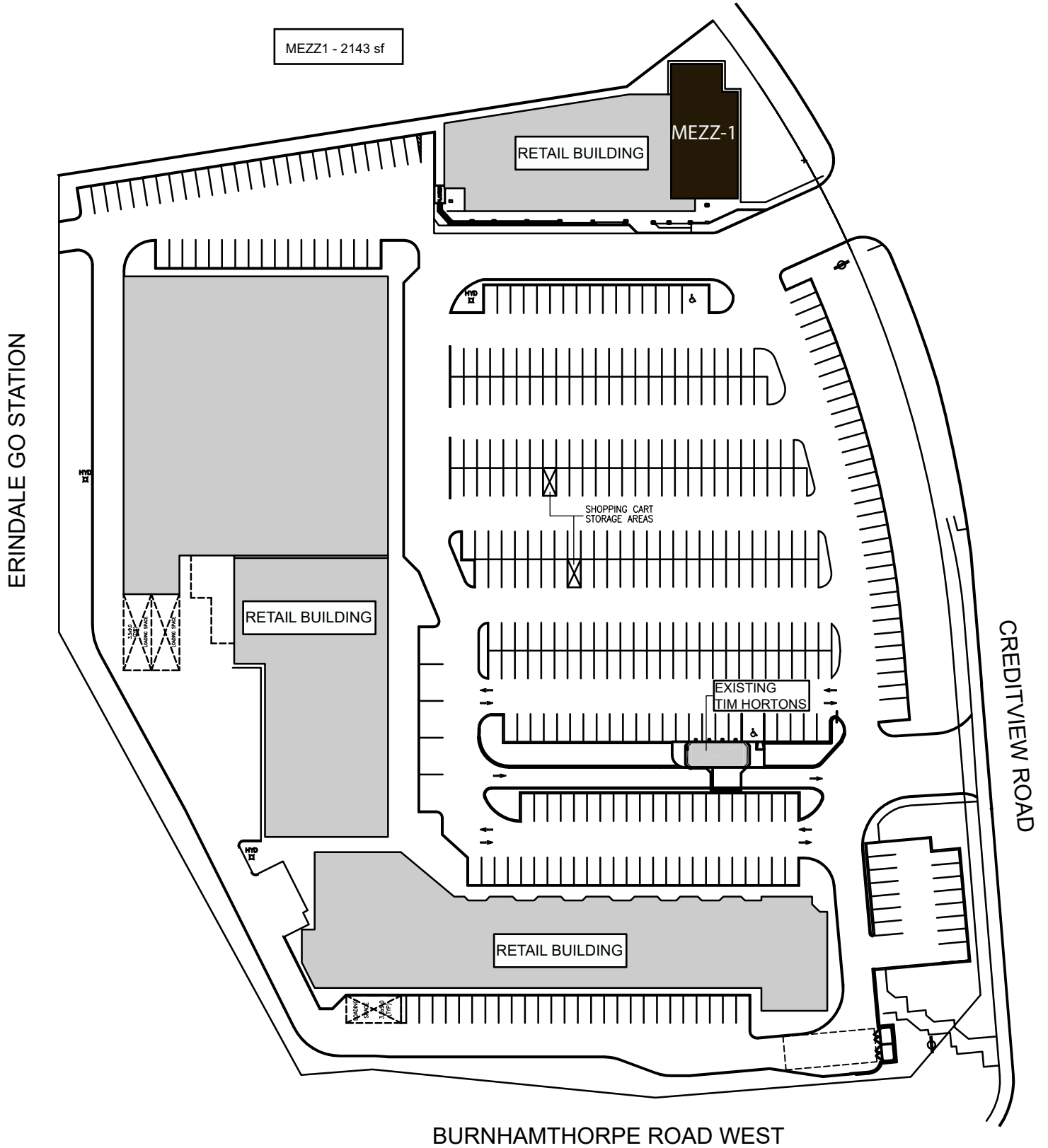
- Erindale GO Station behind the plaza,
- CIBC Bank
- Tim Horton's,
- medical & dental doctors
- both residential and commercial clientele in its trading area.
- Retail GLA: 85,000 square feet
- Parking: 500 spots.
- Year Built: 1983 & 1990

YAD INVESTMENTS LIMITED



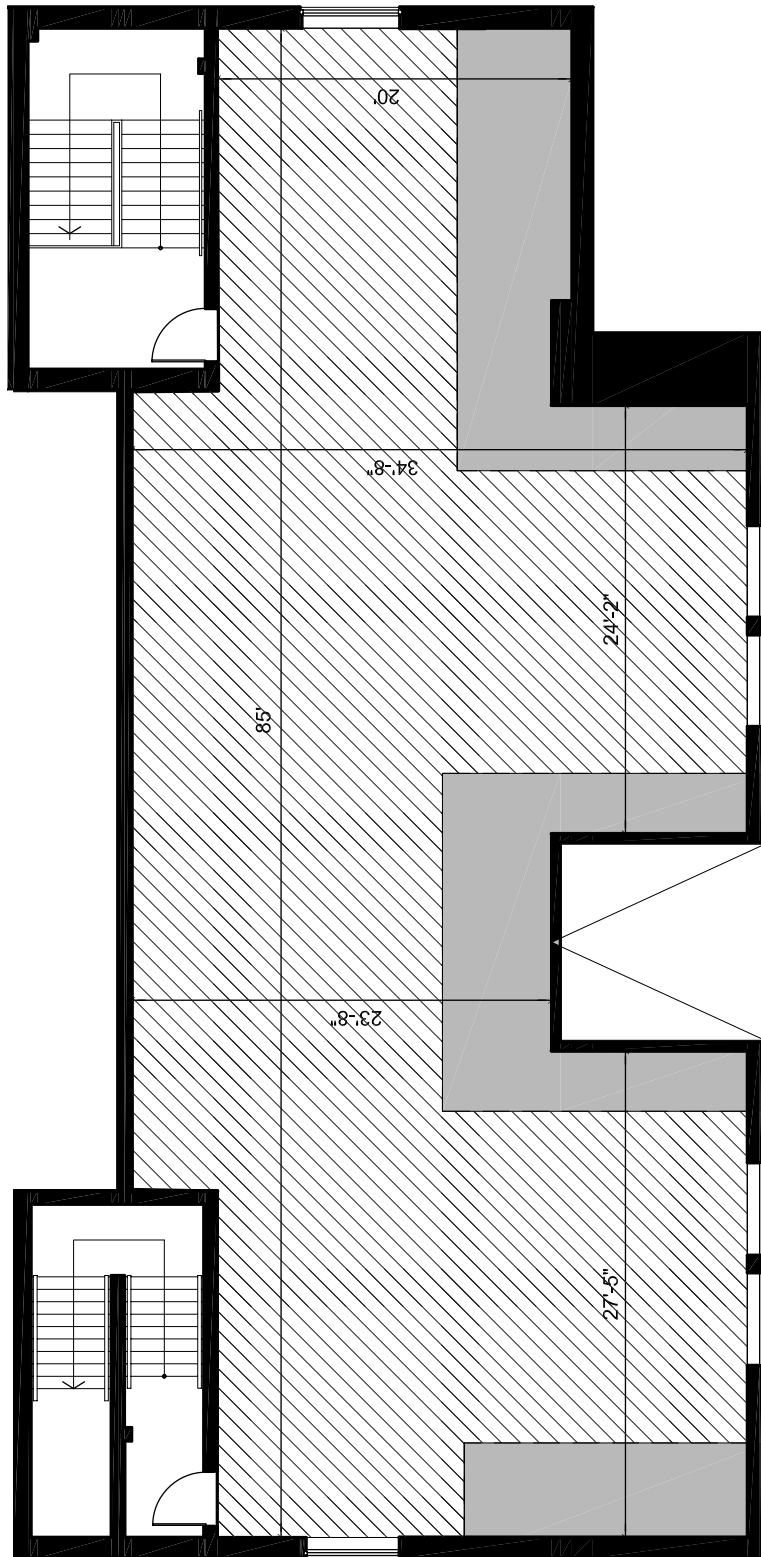
197 Spadina Avenue, Suite 500
Toronto Ontario M5T 2C8

tel: 416-977-7781
fax: 416-977-3451



4040 Creditview Drive
Mississauga, Ontario

MEZZ1 - 2143sf



YAD INVESTMENTS LIMITED



197 Spadina Avenue, Suite 500
Toronto Ontario M5T 2C8

tel: 416-977-7781
fax: 416-977-3451