



4040 Creditview Drive Mississauga, Ontario

Unit 23

| | |
|---------------------|----------------|
| Square Feet | 1,213 SF |
| Rental Rate | Please contact |
| Availability | Immediate |
| Term | Five Years |
| Built | 1983 & 1990 |



Features

- Erindale GO Station behind the plaza,
- CIBC Bank
- Tim Horton's,
- medical & dental doctors
- both residential and commercial clientele in its trading area.
- Retail GLA: 85,000 square feet
- Parking: 500 spots.
- Year Built: 1983 & 1990

YAD INVESTMENTS LIMITED

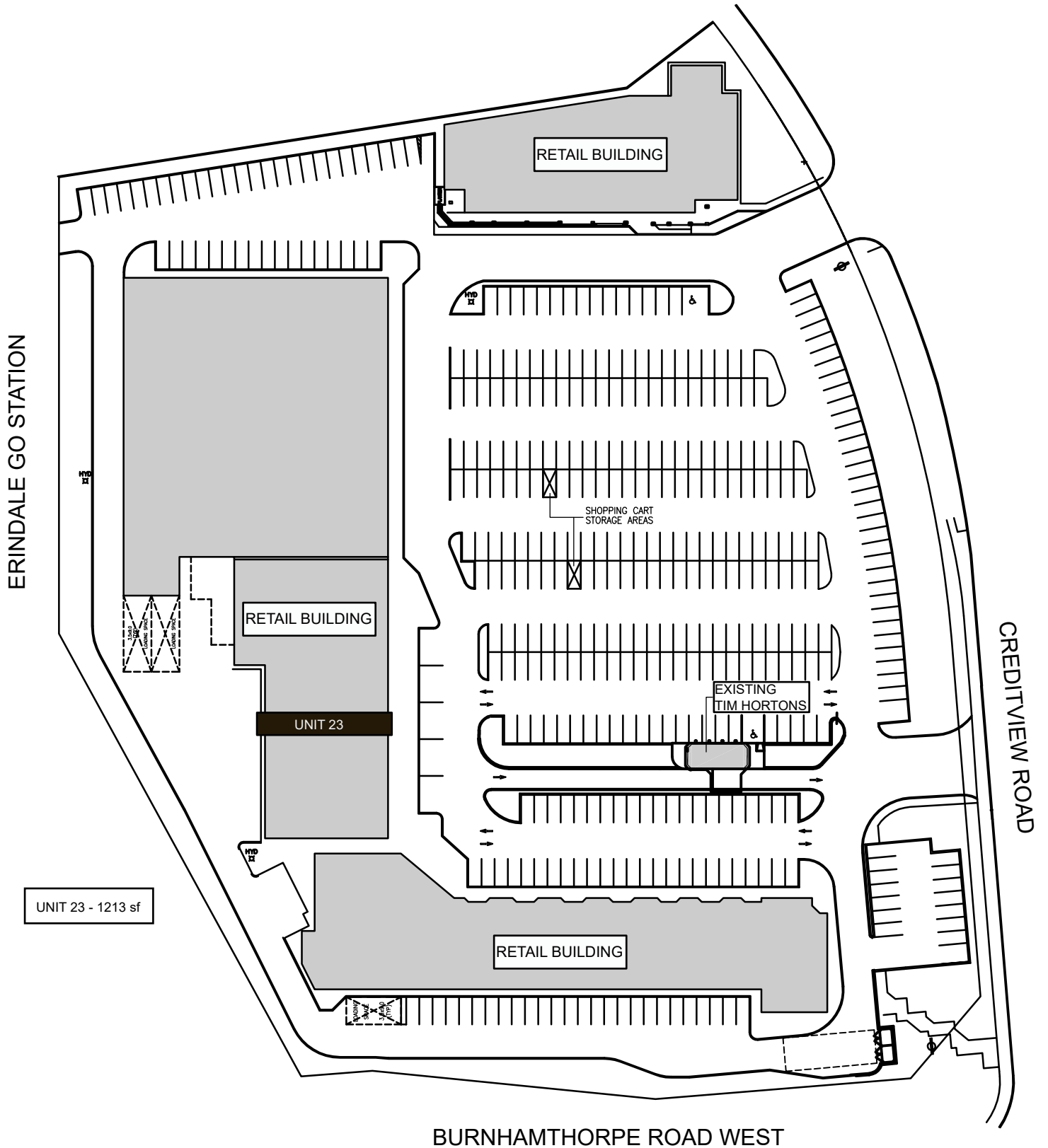


197 Spadina Avenue, Suite 500
Toronto Ontario M5T 2C8

tel: 416-977-7781
fax: 416-977-3451

4040 Creditview Drive
Mississauga, Ontario

UNIT 23 - 1213sf



UNIT 23 - 1213 sf

YAD INVESTMENTS LIMITED

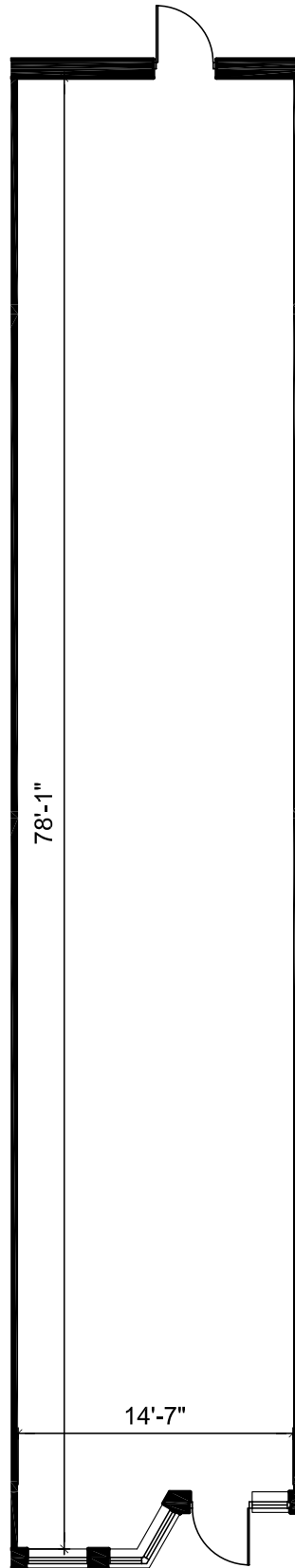


197 Spadina Avenue, Suite 500
Toronto Ontario M5T 2C8

tel: 416-977-7781
fax: 416-977-3451

4040 Creditview Drive
Mississauga, Ontario

UNIT 23 - 1213sf



YAD INVESTMENTS LIMITED



197 Spadina Avenue, Suite 500
Toronto Ontario M5T 2C8

tel: 416-977-7781
fax: 416-977-3451